

Residential care home

# Brainkind Shinewater Court



**Brainkind Shinewater Court is an innovative, purpose-built residential care home providing support for people with acquired brain injuries and who have complex care needs. We make sure that the people we support can live as independently as possible in an environment that enhances their wellbeing.**

## About Brainkind Shinewater Court

Brainkind Shinewater Court offers specialist, person-centred care and support for people with complex and high-dependency needs.

Located in Eastbourne, East Sussex, we help the people we support to live as independently as possible and offer long-term care for those who need it.

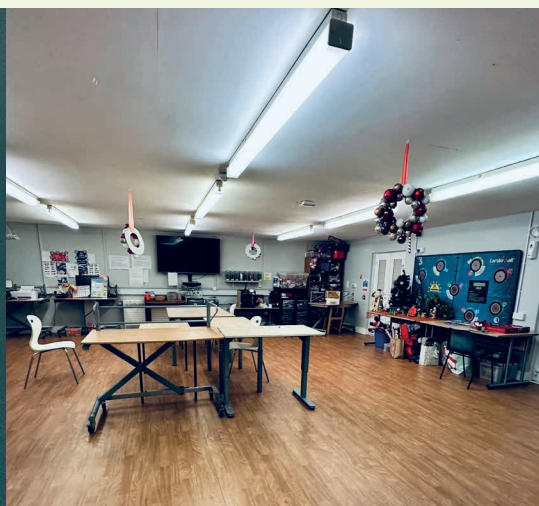
Our programmes include educational and therapeutic sessions; support for personal, social, and domestic skills; guided leisure time; vocational support and training; and access to the local community.

Brainkind Shinewater Court, rated 'Good' by the CQC, is equipped with a wide range of facilities to help support the delivery of our expert care.

Our multidisciplinary team has access to specialist equipment to aid the people we support in their daily life.

The people we support are actively involved in reviewing their progress. We promote the involvement of families, and home leave is encouraged wherever possible.

Whether someone needs assistance with daily tasks, help to improve emotional or social skills, or support with their physical wellbeing, our services ensure that life after a brain injury or with complex care needs is a life well lived – whatever that means to the people we support.





## Overview

- 13 separate flats
- 23 en-suite rooms
- A communal lounge and a communal dining area
- A beautiful courtyard
- A kitchen adapted for people with disabilities
- A physiotherapy room
- An activity centre
- Main dining room, often used for parties and discos.

## Becoming more independent

Access to the wider community forms an important part of our rehabilitation programme. In addition to our main residential accommodation, we have 13 sheltered flats, which offer greater independence for the people we support who would like to move to their own homes.

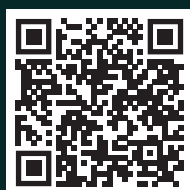
Eastbourne has an attractive seafront with Beachy Head and the South Downs within easy reach. The people we support also have easy access to many other amenities, such as a local shopping complex, a leisure centre, and colleges. Our staff arrange regular trips to shows, concerts, and sporting events.

## Conditions we specialise in

We provide support for and specialise in the rehabilitation of people with acquired brain injuries or complex neurological conditions who are experiencing one or more of the following:

- Cognitive problems including thinking, memory, learning, awareness, and perception
- Physical impairments that affect mobility, posture, or dexterity
- Communication difficulties
- Complex care needs.

This is not an exhaustive list. We welcome all enquiries and consider each on a case-by-case basis.



## Referrals

To make a referral please email [referrals@brainkind.org](mailto:referrals@brainkind.org) or call 01904 954 146 (cost as a standard landline) to speak to our team.

## Contact

Phone: 01323 769196  
Email: [anita.cobb@brainkind.org](mailto:anita.cobb@brainkind.org)  
Address: Shinewater Court, Milfoil Drive, Eastbourne, BN23 8ED